

Mid-Michigan Section of SAE Recognition Night
Dinner and Program

Monday, April 25, 2011

6:00 PM Social Hour, 6:45 PM Dinner Buffet, 7:30 Program

8:15 to 9:00 PM Guided tour of museum

Lingenfelter Car Collection

7819 Lochlin Drive, Brighton, MI

Students \$18; Retirees \$20; Members \$25; Non-members \$30

The Mid-Michigan Section of

SAE
INTERNATIONAL®

midmichigansae.org

[Purchase online](#)

Lingenfelter Performance Engineering The Building of Performance Vehicles



Bugatti Veyron Super Car



Lingenfelter 2010 Camaro House
Car runs high 9s @ 138MPH

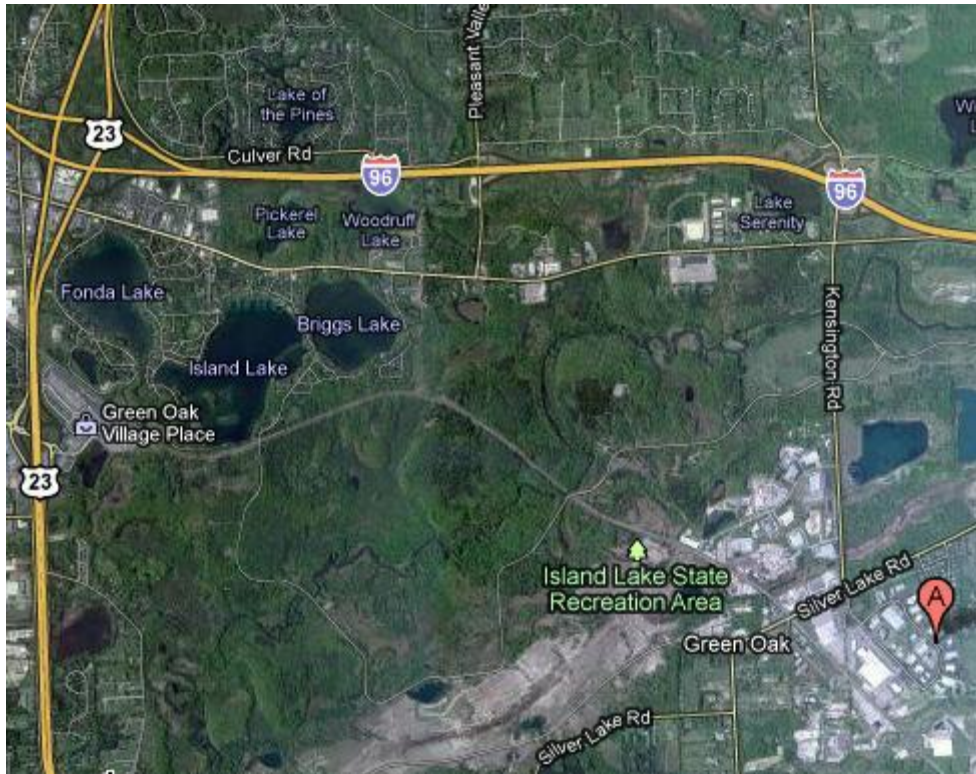
The Lingenfelter Collection includes over 150 vehicles that make up one of the greatest car collections in the United States. Join us for a tour of the Lingenfelter private museum, where you will see some of the finest Corvettes, Muscle Cars, and Exotics, including the Bugatti Veyron super car. Our Host, Mike Copeland, will give a presentation on the construction of one-off specialty vehicles. Ken Lingenfelter's custom 1955 Chevrolet pickup (built by Mike) will be the presentation display vehicle. It will be on a hoist to display chassis features and allow total inspection of the vehicle. The guided tour of the museum will follow and will include information on the various vehicles encountered during the tour. Seating at this event will be limited, so be prepared for a considerable amount of standing.

www.thelingenfeltercollection.com

**Capacity is limited at this event,
so make your reservations early!**

Mike Copeland is the Operations Manager of Lingenfelter Performance Engineering in Michigan. Mike spent more than 25 years engineering and building performance and show related vehicles at General Motors. These vehicles include the Hot Rod Magazine Solstice, Reggie Jackson's LSX powered 69 Camaro, and Popular Hot Rodding's 1957 Chevy Project "X" to name a few. Mike's last position at General Motors was Project Manager, GM Performance Division. Mike is also CEO of Diversified Creations, a performance and off-road business in Brighton, Michigan. He has authored technical articles for several top automotive performance magazines.

Make reservations early! Capacity is limited.
Reservations required by Noon Thurs. April 21, 2011
To pay at the door, contact Bernard Santavy, (810) 635-7948 OR
SAEMidMichSec@cs.com Or pay online at midmichigansae.org



Directions:

**US23 south to
I96 east to**

Kensington Road south (turns into Kensington Court at Silver Lake Road)

Turn left on Lochlin Drive.

Continue to Lingenfelter Car Collection Museum, 7819 Lochlin Drive, Brighton.

[Click here for Google Maps](#)