

Mid-Michigan Section of SAE

Monday April 29th, 2013

6:00 PM Social Hour, 7:00 PM Dinner, 8:00 Program

at **The Lingenfelter Collection**

7819 Lochlin Drive Brighton, MI

Students: \$20, Retirees: \$25, Members: \$30, Guests: \$35

The Mid-Michigan Section of

SAE
SAE
INTERNATIONAL®

midmichigansae.org

Social Hour: Tour The Lingenfelter Collection



Program: Katech V4 High Performance engines

Speaker: Fritz Kayle, Katech Founder & CEO presents V4 High Performance Engines

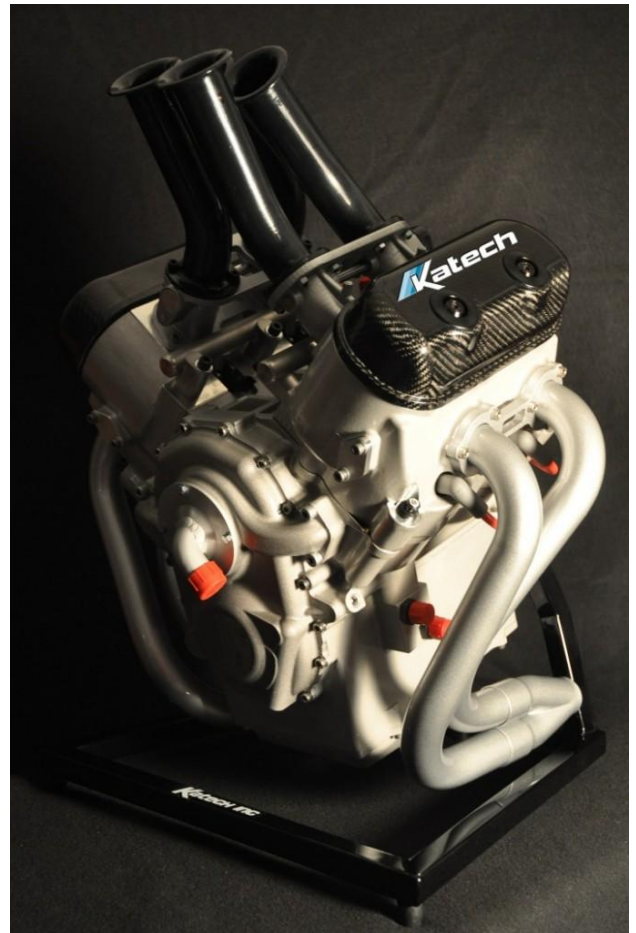
Due to rising demand, Katech designed and manufactured an innovative, highly efficient, high power density, compact and configurable V4 engine to power your auto-sport, aviation, marine, ATV and industrial applications. The V4 draws on the legendary architecture of the Corvette LS series V8 engine. The engine is very light and because of its' compact design can be retro-fitted into almost any application.

KV4 Street specs

Displacement: 1.6L (100 CID), Naturally Aspirated
Power: 160 bhp @ 6,600 rpm, Torque: 127 lb-ft @ 5,800 rpm
Redline: 7,800 rpm Dry Weight: 140 lbs
Intake System: Individual runner or plenum
Oiling System: Wet Sump, Fuel System: Port Fuel Injection

KV4-R Motorsport Spec

Displacement: 1.9L (117 CID), Naturally Aspirated
Power: 260 bhp @ 9,500 rpm, Torque: 170 ft-lbs @ 7,200 rpm
Redline: 9,500 rpm, Dry Weight: 138 lbs.
Intake System: Individual runner or plenum
Oiling System: Wet or Dry Sump, Fuel System: Port Fuel Injection



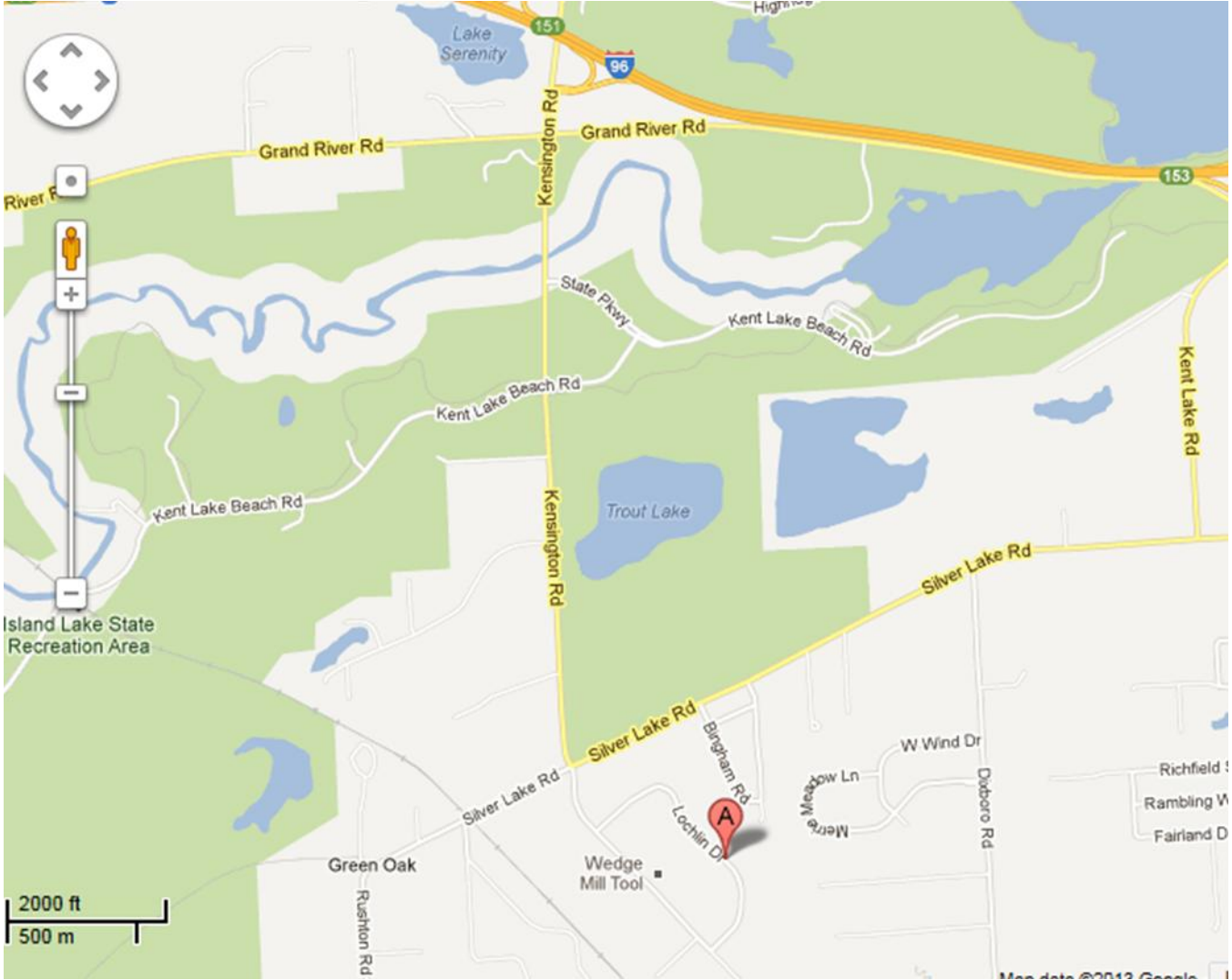
Reservations Required by : Noon Thurs. April 25th, 2013

Contact: **Bernard Santavy** at: SAEMidMichSec@cs.com or (810)-635-7948

Purchase ticket online: <http://www.midmichigansae.org>

Buffet Meal provided

The Lingenfelter Collection 7819 Lochlin Drive Brighton, MI 48116



Lingenfelter Concept Camaro and Corvette vehicles

